

REPORT TO THE COMMUNITY 2023



United
Way



United Way
of Greater New Bedford



OUR MISSION

UNITED WAY OF GREATER NEW BEDFORD MOBILIZES PEOPLE, PARTNERSHIPS, AND RESOURCES TO CATALYZE CHANGE THAT STRENGTHENS THE COMMUNITIES WE SERVE.

SERVICE AREA | Acushnet, Dartmouth, Fairhaven, Freetown, Marion, Mattapoisett, New Bedford, Rochester, and Wareham.

A MESSAGE FROM THE PRESIDENT & CHAIR

As you will see in this annual report, we serve, convene, and support by funding other nonprofits, offering our own direct services, and bringing together neighbors to help neighbors.

United Way of Greater New Bedford is often an unseen, reliable hand lifting our community. We can be that because of you, our generous donors, volunteers, and dedicated and talented United Way staff.

Over the past year, we have worked to elevate our staff and improve our ability to work effectively as a team. We have invested additional time in learning collectively, reflecting, and fostering deeper connections to enhance our collaboration. This staff cohesion has already resulted in greater attainment of existing goals and brought about new initiatives, laying a foundation for more change in the year as we launch an effort focused on economic mobility.

To that end, we are creating a new strategic plan to guide us over the next several years. Our objective is to enhance our impact in key focus areas by harnessing the full spectrum of resources and capabilities that United Way brings to the community through a more concentrated and coordinated approach.

Our work has a single purpose: to serve our community better. We strive to make the most effective use of volunteer enthusiasm and the generosity of our donors to ensure that every child and every family in our region can thrive.

We are profoundly grateful for this generosity. Every hour and dollar you donate, every bit of wisdom and expertise you share with us, helps make our community a better place to live.

UWGNB has served this region for 70 years. In that time, we have continuously evolved to meet new needs, challenges, and adapt to new fundraising realities. With your support, we will remain the nimble and dynamic organization our community needs and deserves, able to serve as a catalyst for sustained change and respond to crises as they arise.

With gratitude,

Michelle N. Hantman
President & CEO
United Way of Greater New Bedford

Dr. Shanna Howell, PhD.
Vice Principal of Student Support Services,
Southeastern Regional Vocational Technical High School
Board Chair, United Way of Greater New Bedford



Michelle N. Hantman & Dr. Shanna Howell, PhD.



SERVE

United Way of Greater New Bedford has provided direct programming to our community for decades. Our direct service work allows families to access essential services in comfortable and welcoming settings. These programs have the flexibility to offer a range of resources for families and children to ensure their needs are met. By collaborating with other organizations, we provide additional programming that families have expressed a need for or interest in. We also collaborate on statewide and national initiatives alongside other United Ways to better serve all residents.



The Family Resource & Development Center (FRDC) is part of a network of 33 centers statewide offering support and training to parents and other caregivers of children 18 and younger to promote self-sufficiency, strengthen family bonds, and enhance children's connections with their community.

Funded by the Massachusetts Executive Office of Health and Human Services and the Department of Children and Families, FRDC offers a safe space where caregivers can meet with Family Support Workers to access a vast library of local resources and utilize computers for personal use. The goal is to provide opportunities for parents and their children to thrive and succeed.

New this year, FRDC launched Job Readiness to assist with cover letter and resume writing, and help clients build their interview skills. Armed with these basic materials and self-confidence, job seekers were successful in securing employment. FRDC also continued all other core programs, including Nurturing Fathers, a 13-week, evidence-based, training course designed to teach parenting and nurturing skills to men by providing training on proven, effective skills for healthy family relationships and child development. Through these sessions, fathers support one another as they strive to be active, positive, and important parts of their children's lives.

FRDC staff is fluent in Spanish, Portuguese, and Cape Verdean Creole to ensure there are no barriers for people needing services. Open five days a week, with evening and Saturday programs, FRDC stands by, ready to help families.



New Bedford Family Resource & Development Center

202

NEW FAMILIES REFERRED TO THE FRDC

590

FAMILIES SERVED BY THE FRDC

HUNGER COMMISSION

The Hunger Commission distributes hundreds of thousands of pounds of food and logistical support free of charge to programs that support families and individuals in need, including food pantries, shelters, soup kitchens, and Council on Aging Centers. The Hunger Commission not only serves Greater New Bedford but also serves Fall River and Westport food programs.

Nearly all of the food distributed by the Hunger Commission is rescued from local food institutions that have overages of product they are unable to use or sell. This food is delivered to partner programs on a weekly basis to ensure residents have access to food.

In addition to the daily work of the Hunger Commission, United Way is an active member of the Southcoast Food Policy Council to collaborate with additional organizations in the region regarding statewide policy and decision-making, increase local food access, and discuss more ways to alleviate food insecurity regionally.

The Hunger Commission has expanded its work in the last decade by leading initiatives to increase the access to food, including the Stamp Out Hunger Food drive with the United States Postal Service, Hunger Heroes, and Mobile Markets.

200,000+ LBS. OF FOOD WAS DISTRIBUTED THROUGHOUT THE SOUTHCOAST



MOBILE MARKET

5,427 RESIDENTS BENEFITED FROM MOBILE MARKETS

United Way's Mobile Market has operated as a free farmer's market for the past nine years, increasing access to healthy food in targeted neighborhoods in New Bedford and Wareham. Residents are able to select the produce items and quantities that are right for their families. All produce distributed is grown at Sharing the Harvest Community Farm, a program of YMCA Southcoast, Dartmouth. Recipe cards are on site to provide different meal preparation ideas with the produce on hand.

Mobile Markets are sponsored by BankFive and Southcoast Health, whose employees volunteer their time to staff the markets each week from July to October, alongside other community volunteers.

Mobile Markets are hosted after 5 pm to accommodate working residents who are unable to access food during traditional pantry hours.

108 VOLUNTEERS SERVED AT MOBILE MARKETS





Women United is a global, growing force of 70,000+ women dedicated to creating a world of opportunity and is active in 165 communities in 6 countries. We're proud to have Greater New Bedford amongst this inspiring network.

Locally, Women United works with our members, community organizations, business owners, and volunteers to ignite positive change in the areas of early childhood success and literacy through unique initiatives, including Wash & Read, Bright by Text, and Baby Bundles. Funding for Women United programs and initiatives comes from members who make an annual financial commitment as well as our signature event, Power of the Purse.

The Women United Leadership Council was formed in 2022 to provide strategic direction to our Women United initiative and deepen our support of women, children, and families. The Council comprises female leaders from our region who provide financial support, time, and professional expertise and lead by example. They are committed to leveraging the collective power of women to elevate and strengthen women of all backgrounds through education, action, and philanthropy.

As we look to the future, we are expanding our efforts in the area of financial literacy through education and one-on-one support. We are excited to deepen United Way's commitment to economic mobility in an effort focused on women's financial literacy.



In 2023, Women United hosted its first ever 5K in partnership with Women Run

Wash & Read



POWERED BY WOMEN UNITED

Women United expanded our innovative Wash & Read program, which encourages children to read while giving them access to books during trips to local laundromats. The Dartmouth Laundromat became the seventh location to join the program.

Children going to laundromats with their parents spend about 2.5 hours at laundromats each week, and Wash & Read gives them the chance to be entertained and encouraged to read in cozy reading corners while the grownups are doing laundry.

The New Bedford Free Public Library assists the Wash & Read program by housing books collected to restock the laundromat bookshelves. Many of the program's books are donated, and volunteers update the shelves each month.



Since 2018 we have distributed 8,069 books

Bright by Text



Text GREAT to 274448



Bright by Text is a free text messaging service for anyone who cares for or loves a child—prenatal to age eight.

Powered locally by Women United, this national program delivers expert tips, activities, events, and resources directly to the subscriber's phone in English or Spanish.

Messages use the child's age and zip code to offer relevant information. Subscribers receive two to four messages per week, including notifications about events such as preschool enrollment and learning activities with links to research-based content on a child's development. We also partner with organizations and libraries to promote their free activities.

As a child grows, the messages change to reflect developmental milestones.

Free activities, events, and resources for parents and caregivers of children prenatal to age 8!

1,093
CURRENT
SUBSCRIBERS





Mass 211 is a free, confidential referral hotline that connects residents to local information about health and human services.

Mass 211 can be accessed anytime by dialing 211 or visiting mass211.org. It provides information in more than 150 languages.

United Ways partner with the Massachusetts Association and Referral Specialists (MAIRS) to provide the resources to operate Mass 211. Callers receive up-to-date information about support groups, childcare facilities, utility assistance, government benefits, crisis response programs, and other essential services.

In 2022, the United States designated 988 to be the National Suicide and Crisis Lifeline. When you dial 988 in Massachusetts, you will be connected to one of five call centers, including Call2Talk, which is run by Mass 211. Not only does Call2Talk provide confidential emotional support and assists individuals and families through stressful times, but they also provide Telecheck, which is a telephone check-in service for isolated older adults living at home.

Trained Call2Talk staff provide phone-based visits, support, and friendly conversation one to two times per week. Callers can access Call2Talk and Telecheck by dialing 211.

211
is made possible
by local United
Ways and
the state of
Massachusetts.

6,238
CALLS MADE LOCALLY TO 211



Help is three numbers away.

211 NON-EMERGENCIES	988 SUICIDE AND CRISIS	911 EMERGENCIES
<ul style="list-style-type: none"> Food Housing Utility Assistance Healthcare Services Transportation Legal Services Counseling 	<ul style="list-style-type: none"> Thoughts of Suicide Mental Health Crisis Substance Use Crisis Emotional Distress Veterans Crisis 	<ul style="list-style-type: none"> Medical Fire Crime Abduction Domestic Violence Impaired Driving Suspicious Activities



SingleCare lowers the cost of prescription medications by as much as 80% for uninsured or underinsured families and individuals. Users can also find the best prices for prescriptions with an online tool that compares costs at participating pharmacies. SingleCare also publishes monthly blogs with seasonal topics to keep you at your healthiest.

SingleCare can help you save on prescription costs for every member of your family – including your pets!

You can obtain a free SingleCare card online or at United Way and present it at your pharmacy for instant savings. Visit unitedwayofgnb.org/singlecare to get your free card today.

\$583,332
SAVED BY GREATER NEW BEDFORD
RESIDENTS USING SINGLECARE



PATCH

Patch is a community-based approach to child welfare through a partnership with the state Department of Children and Families New Bedford Area Office (DCF), United Way of Greater New Bedford, and the New Bedford Community Connections Coalition (NBCCC).

The Patch model works to prevent child abuse and neglect by bringing together community and state resources to assist two Patch units. Last year, NBCCC supported both DCF Patch Units with connection to ten different agencies that provide guidance and resources to individuals and families. NBCCC also works to coordinate basic needs support and continuously shares community resources and event opportunities for families.

The Patch team has been able to successfully collaborate with educational institutions and other organizations, including the Gomes and Jacobs Elementary Schools and the Community Economic Development Center (CEDC).

Partnering with schools has allowed for regular academic updates and enables information to be shared between DCF and the schools more efficiently. Working with the CEDC has allowed DCF to help bridge the communication gap between the Guatemalan community and DCF for foster home recruitment efforts.

The Patch team also collaborates with the Family Resource and Development Center to connect the families we work with directly to resources in the community, with the hopes of reducing the need for current or future DCF involvement.



CONVENE

The mission of United Way of Greater New Bedford is to build stronger, more connected communities by bringing people together for the common good. As a trusted liaison between the corporate and local nonprofit sectors, we have built a range of partnerships that make us uniquely suited to serve as a community convener. When businesses, public agencies, and nonprofits work together, we broaden our reach and deepen our impact.

Central to this mission is the power of volunteerism. Our core strength lies in our ability to mobilize volunteers from all walks of life, bringing together a diverse group of individuals who want to make a difference. We serve as a rallying point for community members who wish to lend their time, skills, and compassion to causes that matter most to them. When organizations and individuals join forces, we create neighborhoods and communities that benefit us all.





Since 1996, United Way has been the fiscal partner and home of the **New Bedford Community Connections Coalition (NBCCC)**. The NBCCC mission is to build a continuum of family support services and resources in our most at-risk neighborhoods to decrease factors that lead to child abuse and neglect.

Funded by the Massachusetts Department of Children & Families (DCF) and guided by an advisory board representing key institutions in the city and region; NBCCC offers a range of services and partners with a wide variety of organizations. This year NBCCC supported foster children and families; helped families cope with the effects of substance use, focused on raising awareness of engaging fathers, and built capacity of local professionals through diverse training opportunities.

Whether it is car seat safety classes, parent education programming, or training on historical trauma and implicit bias; it is all with the goal of strengthening families and the people that serve them. NBCCC continues to connect DCF to the community by supporting efforts to bridge the gap between the Department and the Guatemalan community, taking a leadership role in the Father Engagement Leadership Team (FELT) at DCF, and convening the Partners for Foster Care Support initiative. PFCS continues to expand its support and services to foster children and families as well as supporting foster parent recruitment efforts.



AmeriCorps

The New Bedford Strengthening Families (NBSF) **AmeriCorps** Program – a national service program whose members provide services to make people safer, stronger, and healthier to strengthen their communities – **marked the completion of its 3-year program in 2023.**

AmeriCorps members made a lasting impact on many parents and families in the community. Members successfully completed Nurturing Skills for Families parent education programming with 17 parents; completed over 15 parent group “cafes” by partnering with others, such as the Healthy Families Program, several New Bedford Public Schools, and the Family Resource & Development Center; and supported or led multiple family-friendly activities at the Demello International Center.

Throughout the year, members also received valuable professional development and built family engagement skills by leading cafes and working individually with many parents involved in the child welfare system. Over the course of the three-year program, 15 AmeriCorps members finished service terms working on behalf of the community.

SERVICE ENTERPRISE

United Way of Greater New Bedford works with the **Massachusetts Service Alliance** to help local nonprofits make the best use of volunteers through the **ALIVE Service Enterprise** certification program.

UWGNB, itself a Service Enterprise, coaches area organizations working toward certification. We currently are coaching Buttonwood Park Zoo, United Way of Greater Fall River, Damien’s Place Food Pantry (pictured), and the Project Independence Adult Day Care Center through the rigorous process.

The program begins with a diagnostic test to determine where an organization is already doing well with volunteer management and where it can improve. Then, organizations participate in four half-day training sessions on such skills as tracking volunteer hours, onboarding volunteers, writing a volunteer handbook, and other management tasks. Nonprofits then have a year to implement changes and achieve certification.

The training and coaching are provided at no charge, but the \$5,000 value can provide a much bigger payback. Service Enterprises are among the top 11% of nonprofit organizations nationwide in volunteer management and organizational performance. They more effectively serve their communities at about half the cost of nonprofits that do not make full use of volunteers.



MASSACHUSETTS SERVICE ALLIANCE



Service Enterprise Program

41 PROFESSIONALS PARTICIPATED IN A FOCUS GROUP OR TRAINING ON FATHERHOOD ENGAGEMENT

64 ACTIVITIES, WORKSHOPS, FORUMS, AND PARENT SUPPORT GROUPS PROVIDED

150+ FAMILIES PARTICIPATED IN COALITION ACTIVITIES AND INITIATIVES

122 TOTAL COLLABORATIONS WITH PARTNER ORGANIZATIONS ACROSS ALL ACTIVITIES, WORKSHOPS, FORUMS, PARENT SUPPORT GROUPS, AND OUR ADVISORY BOARD

24 ORGANIZATIONS LOCALLY HAVE PARTICIPATED IN SERVICE ENTERPRISE

13 HAVE CERTIFIED

4 WORKING TOWARDS CERTIFICATION IN 2024

Often people want to make a difference in their neighborhood and community but don't know where to begin. **Volunteer SouthCoast (VSC)** helps connect people who want to volunteer with organizations that need their help. Hosted by United Way of Greater New Bedford, VSC is a free online database that lists more than 200 volunteer opportunities. You can search by distance from your home, interest area, or organization to find something right for you. Interested in making a difference in your neighborhood or community? Volunteer SouthCoast and United Way can help you get started—visit www.volunteersouthcoast.org.



Find opportunities and track your hours on the go! Download the **CauseConnect** app and login with your **Volunteer SouthCoast** credentials.

536 INDIVIDUALS VOLUNTEERED WITH UNITED WAY ON THE BOARD AND COMMITTEES, WITH MOBILE MARKETS, AND AT COMMUNITY ENGAGEMENT EVENTS

2,959 HOURS OF VOLUNTEER SERVICE, VALUED AT \$88,630, WERE COMPLETED WITH UNITED WAY

1,073 VOLUNTEERS WERE CONNECTED WITH OPPORTUNITIES AT OTHER ORGANIZATIONS THROUGH VOLUNTEER SOUTHCOAST



Baby Bundles

The arrival of a newborn baby is a joyful event, but it can also be overwhelming for a mom and family facing new demands and expenses.

The **Baby Bundles** program, powered by Women United, ensures that new moms have the basics, such as diapers, wipes, bottles, books on infant care, and information on local services and resources.

Donations are collected through baby bundle collection drives held at area businesses and through an online registry. Women United members and their children package the bundles, which are delivered to Southcoast Health and New Bedford Community Health who, in turn, distributes the supplies to women in need.

31 COLLECTION DRIVES
44 VOLUNTEERS
200 BABY BUNDLES DISTRIBUTED



Scores of volunteers each year pull together every fall and spring through the United Way **Hunger Heroes** program to feed the thousands of people in Greater New Bedford who struggle to get enough food.

Each November, as the nation celebrates National Family Volunteer Day, volunteers gather to package about 1,000 Thanksgiving meals—with everything from cranberry sauce to pie—for families in need.

Food is collected through more than 30 food drives and the Hunger Heroes Food Drop, done in partnership with Fun 107 and WBSM. Sharing the Harvest Farm at YMCA Dartmouth grows the butternut squash, and Table Talk Pies provides the pies that are added to each meal. The Hunger Commission delivers the packaged meals to local partners for distribution throughout the region.

Hunger Heroes has also added a spring edition, which in April packages 1,000 kid-friendly meals to ensure that children who rely on school meals for their nutrition have access to good food during school vacations. Schools in Greater New Bedford distribute these meals.

310 VOLUNTEERS ENGAGED THROUGH HUNGER HEROES

65 COMBINED FOOD DRIVES FOR FALL & SPRING

1,000 THANKSGIVING MEALS PACKAGED

1,000 KID-FRIENDLY MEALS PACKAGED



DAYS OF CARING

United Way boosts the work of nonprofit organizations in our area with two annual **Days of Caring**, a long-standing United Way tradition. Days of Caring convenes residents to volunteer alongside their peers to assist local organizations in completing projects that may otherwise have gone undone due to the capacity of the nonprofit.

In the spring, the **Youth Day of Caring** exposes high school students to volunteerism. This past spring, over 100 students from six schools volunteered across the region at eight nonprofits to complete painting, landscaping, and general clean-up projects.

Each September, Day of Caring encourages companies to organize teams of employee volunteers, while individuals recruit friends, colleagues, and family to join them. Last fall, nearly 90 adults took part in the Day of Caring to give back.

These annual days allow residents to volunteer and find reward in giving back to our community, which is well worth the time they invest.

100 STUDENT VOLUNTEERS

6 SCHOOLS

8 PROJECT SITES



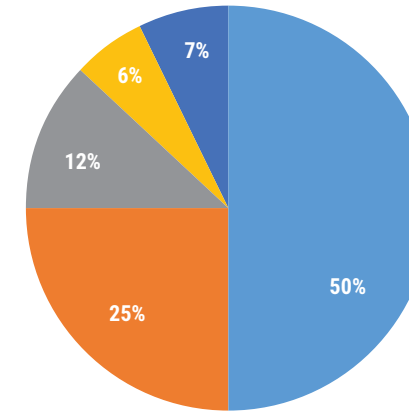
89 VOLUNTEERS

8 COMPANIES

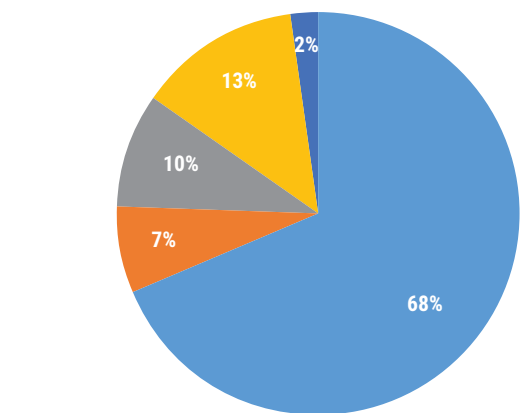
9 PROJECT SITES

FINANCIALS

Sources of Operating Funds



Uses of Operating Funds



DATA

Sources of Operating Funds

Program Support	\$1,646,303
Annual Campaign Support	\$822,456
Special Events & Sponsorships	\$390,187
Grants	\$201,722
Endowment Activity	\$243,064

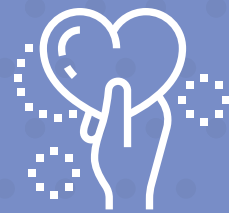
Uses of Operating Funds

Community Investment	\$2,234,925
Special Events	\$237,879
Fundraising	\$309,516
Management & General	\$410,366
Uncollectibles & Depreciation	\$71,030

United Way of Greater New Bedford works to keep overhead administrative costs far below the Better Business Bureau's recommendation of up to 35% for nonprofit organizations. Last year, our administrative costs were 13%.

Please go to unitedwayofgnb.org for the complete 2023 audited financials.





SUPPORT

United Way recognizes that no one organization can provide all of the services that each resident needs to thrive; that's why we invest hundreds of thousands of dollars into Greater New Bedford each year to support the work of other nonprofits and community groups. We prioritize our investments to address the issues of health, education, and economic mobility – knowing that these are at the root of basic needs in the region. Through our grantmaking, we provide funding to the organizations that address the most pressing needs of residents while ensuring these programs are high quality, inclusive, and equitable.



COMMUNITY IMPACT GRANTS

Through **Community Impact Grants**, United Way of Greater New Bedford serves as a catalyst for community change. Money for the grants is raised through the annual campaign, which is supported by hundreds of generous donors. This money, raised in the region, is quickly and flexibly invested back into neighborhoods based on priorities set by its community members. Suitably, individuals and the community are lifted up in ways that serve everyone.

This year, United Way invested \$400,000 in the region through Community Impact Grants. Twenty-four organizations were awarded grants to provide programming and services to benefit residents of our region. Grants of up to \$25,000 went to support programming ranging from providing educational opportunities for young people to delivering addiction services, financial management training for 1st time homebuyers, and supporting immigrants' basic needs.

HEALTH

Caritas Communities	Resident Supportive Services Program in New Bedford	\$20,000
Centro de Ayuda y Esperanza Latina	The Bridge of Hope	\$10,000
Child & Family Services	Caring Network	\$15,000
Children's Advocacy Center, a program of JRI	Healing & Resiliency Program (HARP)	\$15,000
Health Imperatives	New Bedford Now: Sexual and Reproductive Health Clinic	\$25,000
High Point Treatment Center	Low Barrier Community-Based Services	\$20,000
Immigrants' Assistance Center	Multi-lingual Basic Needs	\$15,000
Steppingstone Incorporated	The New Bedford Women's Graduate Program	\$15,000
The Family Pantry-Damien's Place	Healthy Food Baskets	\$25,000
Health Total:		\$ 160,000

ECONOMIC MOBILITY

Coastline Elderly Services	Money Management Program	\$15,000
Community Economic Development Center (CEDC)	VITA-Free Tax Preparation	\$25,000
NeighborWorks Housing Solutions, Inc.	Homebuyer Education and Coaching	\$10,000
PACE YouthBuild	PACE YouthBuild New Bedford (Blueprint to Financial Literacy)	\$20,000
Turning Point	Turning Point Day Resource Center	\$15,000
Economic Motility Total:		\$85,000

EDUCATION

Boys & Girls Club of Greater New Bedford	After School/Summer Program	\$15,000
Coaching4Change	Near Peer Mentoring in New Bedford Public Schools	\$15,000
Dennison Memorial Community Center	Academic Excellence Program	\$15,000
Discovery Language Academy	ESL Youth Program	\$15,000
Meeting Street Massachusetts	Early Intervention Pop-Up	\$10,000
Our Sisters' School	Supporting Students for Academic and Life Success	\$15,000
P.A.C.E. Head Start	PACE Head Start-Therapy Pup Program	\$20,000
South Coast LGBTQ Network	Elevate LGBTQ+Youth	\$20,000
Youth Opportunities Unlimited	Weaving Climate Literacy into Y.O.U.'s Out-of-School Programming	\$10,000
YWCA Southeastern Massachusetts	YWkids School Age Program	\$20,000
Education Total:		\$155,000

TOTAL FUNDING: \$400,000

CHANGEMAKER GRANTS

Since 1995, **Changemaker Grants** have addressed locally identified issues within the United Way key impact areas by harnessing the creativity and energy of all-volunteer groups.

The projects are conceived and implemented by volunteers who have a passion for helping their neighbors and enhancing their community. The impressive range of projects, which this year includes sharing a love of basketball and tennis, offering enriching experiences to students, and improving water quality in the Paskamansett River, show the creativity, varied interests, and expertise of the recipients. Programs can apply for up to \$2,500 to complete community projects.

United Way proudly supports these projects to help community-based ideas take root, which extends the United Way mission in the region we serve by empowering community members to take action.

2023 Changemaker Grant Recipients

Dog Park Association of Wareham	Swift PTO
Grow Greater New Bedford	Swifts Beach Improvement Association
New Bedford Rowing Center, Inc. (NBRC)	The Paskamansett Project
Rise Up	Village Hoops
Rochester Affordable Housing	Walt's Mobile Closet
Soulflower Yoga and Wellness	West End Tennis Association
Southcoast Condo Community Garden	TOTAL FUNDING
	\$28,304

SINCE 1995

\$906,314

TOTAL INVESTED
IN ALL-VOLUNTEER GROUPS

852

PROJECTS HAVE BEEN
FUNDED



Since 2015 we've covered the cost of:

80 MONTHS OF RENT/
MORTGAGE PAYMENTS

30+ MEDICAL
APPOINTMENTS

35 APPLIANCES & PIECES
OF FURNITURE

9 PIECES OF SPECIALTY
ADAPTIVE EQUIPMENT
FOR CHILDREN

41 AUTO RELATED
EXPENSES



Since 2015, United Way of Greater New Bedford and Townsquare Media, Fun 107 and WBSM 1420 have partnered to support families through **Holiday Wishes**, which helps families and individuals facing extraordinary struggles during the holiday season.

Holiday Wishes assists residents who have fallen on hard times due to loss of job, death, or severe medical conditions of a spouse or child, unanticipated bills that arise due to natural/unplanned disasters, and other unforeseen circumstances.

The ideal nominee is active in the Greater New Bedford area and needs assistance beyond the services provided by traditional health and human service agencies. Over the course of a week, stories are told over the airwaves to encourage listeners to rally around these families to help make the season brighter.

This past year, six families were assisted through Holiday Wishes. Families received a variety of support, including medical appointments and equipment, car repairs, furniture, rent and mortgage assistance, and, of course, toys and clothing for the children to have for the holidays. United Way provides ongoing support to these families to ensure their needs are being met.

This year, we fulfilled an extra special Holiday Wish with the help of the New Bedford Police and Fire Departments. Joseph, a Holiday Wish recipient, had expressed he was interested in becoming a police officer, and we were able to arrange a visit and tour of the New Bedford Public Safety Building, where he got to try his hand at both jobs!

During the Holiday season, we partner with the New Bedford Fire Department to collect and distribute thousands of toys in time for the holidays. We also partner with a number of companies and individuals on giving trees and adopt-a-family programs.



The **Holidays United** Fund is there to help nonprofits brighten the holidays for their clients and families. These grants help our partners spread the spirit of the season and relieve some of the stress families feel during the holidays. In 2022, we awarded \$20,000 to 12 organizations to support their holiday efforts. These funds fill the gap to purchase additional food, clothing, and toys.

2022 Holidays United Recipients

- | | |
|-------------------------------|---------------------------------|
| Damien's Place | NorthStar Learning Centers |
| Harbour House Family Center | Our Sisters' School |
| Health Imperatives | SEMCOA |
| Immigrants' Assistance Center | South Coast LGBTQ Network |
| Kennedy Donovan Center El | St Anthony of Padua Food Pantry |
| MOLIFE Inc. | YWCA Southeastern Massachusetts |

TOGETHER, UNITED

United Way of Greater New Bedford deepened its commitment to racial equity and social justice last year by creating a new fund to support community impact grantees' efforts in those areas.

The **Together, United** fund was established to help organizations better serve diverse communities and advance diversity, equity, inclusion, and access in their practices by providing grants for existing and new initiatives. The programs and training supported by Together, United grants involve both nonprofit staff and board members. The goals of the grant include strengthening cultural, racial, and ethnic understanding, leading to more effective team building, and community service.

The first two grant recipients were Coaching4Change and Dennison Memorial Community Center, which are using the grant money for professional development, educational programming, and training. Grants will be awarded annually to community organizations in United Way's service area.

EMERGING NEEDS & OPPORTUNITIES FUND

When unexpected opportunities to assist the community arise, the United Way staff can tap the **Emerging Needs & Opportunities Fund**.

This past year, the small discretionary fund helped to assist victims of the Royal Crown rooming house fire in New Bedford and funds were used for Market Basket gift cards for the New Bedford Police Department to distribute while making wellness checks on elderly residents.

The fund also continued its support of the Street Sheet, a publication in Spanish, Portuguese, and English that identifies where homeless people can get a meal, find shelter, and secure other services.

GIVING COMMUNITIES

ALEXIS DE TOCQUEVILLE SOCIETY \$10,000 +

James S. & Joan Amaral
Robert P. Clancy
Roland & Tracey Giroux

ADMIRAL \$5,000-\$9,999

Michael K. Davis
Marjorie & Nick Greville
Ari & Eve Sky
Diana Tottenham
1 Anonymous Donor

COMMODORE \$2,500-\$4,999

John & Lisa Calnan
Dr. Joanne D. Cameron
Dr. Paul Chervinsky
Scott & Jennifer* Dubois
Michelle N.* & Jason Hantman
Donald M. Hartley
Christopher M. Hodgson
Peter & Kristen Marshall
Craig A. Mello
Elizabeth A. Nichols
Aaron Novy
Jennifer St. Pierre*
Andrew D. Quinn
Dolly & Steven Sharek

CAPTAIN \$1,500-\$2,499

Nicole Almeida
Maureen* & Ray Armstrong
Carolyn A. Burnham
Catherine Dillon
Francine Ferguson*
Christopher Fortier
Michael & Judi Grimley
William B. Markey
Willitts S. Mendonca
Jordan Paiva

Scharlee Rogers
Mark Silverstein
Dr. Jacqueline Somerville
Carl Taber

COMMANDER \$1,000-\$1,499

Starlene Alves*
Benjamin & Deborah Baker
Edward & Peggy Barry
Cheryl Bartlett*
Glenn S. Booker
Marlissa Briggott*
Nancy Brown*
Kate Carney*
Lori A. Chaput
Nicholas Christ
Robert Collins
Christina R. Connelly*
Jimmy S. Costa
Elizabeth Craig*
Kristine A. Cunningham
Reverend John Douhan
Neil & Jennifer* Downing
Ivis Espinoza*
Monte Ferris, Jr.
Diedre Fountain*
Monica A. Furtado
Dr. Anthony & Mary Ann Garro
Gendreau Family
Steve Gladstone
David A. Gomes
Richard & Lindsay Gordon
Margarita Graham*
Mary W. Harrington
Rosemary Neto Hazzard*
Mark R. Hennigar
Dr. Shanna Howell

Liz Isherwood*
Kathleen W. & Arthur J. Kelly, III
Michael Kelly
Michael J. Kelly
Sarah E. Korolnek*
Michael & Susan Kramer
Brian LaFleur
Leslie Lawrence*
Jordan Lima
Christopher A. Lindner
James N. Linhares
Attorney Kenneth Lipman
David E. Maher
Beth E. McDermott*
Nancy McFadden*
Jeff & Nicole* Mello
Carolyn Metivier*
Paula Montgomery*
Charles W. Moszczanski
Daniel S. Mumbauer
Jennifer H. Nugnes
Jennifer Olivier
Sue & Maurice Pelletier
Carolyn Pontes*
Andrea Rodrigues*
Sarah Rose
Chris & Cecilia Ross
Jason & Christine Rua
Guelmie Santiago*
Jody Seivert*
Bradford Sell
Jill Simoes*
George E. Sine, Jr.
Anne Tangen*
Meena Theva
Tammy A. Williams
Melissa Wojnar
Marsha Fanucci & Thomas Wolf

Our Giving Communities are networks of community-minded individuals who are committed to investing in the health, education, financial stability, and basic needs of Greater New Bedford.



The Navigator Society recognizes individuals and couples whose generosity charts the course for a better future for all residents.

Women United

Women United is a powerful, passionate network of women who influence change in our community through focused investment of their time, talent, and resources.

*Women United Members



The French diplomat and historian Alexis de Tocqueville admired three elements in North American society: liberty, equality, and the spirit of neighbor helping neighbor. The Toqueville Society honors local and national leaders who exemplify these values in their lives, work, and community.

IN HONOR

Brendan Burke
Jane M. Coderre
Kristine Cunningham
Alissa DeSousa
Tracy Ferreira

John Gonzalez
Victoria Grasela
Michelle N. Hantman
Don Hartley
Molly Ann McCarthy

Michelle Rodrigues
Sarah Rose
Mr. Clinton A. Sowle
The Women's Center
New Bedford

IN MEMORY

Joseph Arsenault
Paul Dumas

Carolyn Preece
Michael Sullivan

WORKPLACE CAMPAIGNS

Employees at companies of all sizes have the opportunity to make a difference in Greater New Bedford by making donations to United Way through employee giving campaigns. We thank each participating campaign for their support.

Acushnet Company
AFC Cable Systems
Alden Court Nursing Care & Rehabilitation Center
AMICA
AT&T
Babbitt Steam Specialty
BankFive
BayCoast Bank
Benco Dental Supply Company
Benevity
Better Community Living
Bristol County Savings Bank
Brittany Global Technologies
CD Aero
Child & Family Services
Citizens Charitable Foundation
Citizens Financial Group DBA Citizens Bank
City of New Bedford
Coastal Financial
Colonial Wholesale Beverage
Comcast Corporation
Community Nurse Home Care
Cornell Dubilier Electronics
Costco
Cumberland Farms (EG America)
Davico Mfg.
Dennison Memorial Community Center
Eastern Bank
Edson International Corporation
Enterprise Rent-A-Car

Eversource
Exelon Corporation
Fisher & Rocha
Five Star Manufacturing
Five Star Surgical
Garmin International
General Dynamics
Greater New Bedford Regional Vocational-Technical High School
Hanover Insurance
Health Imperatives
High Point-SEMCOA
Illinois Tool Works
JC Penney
Johnson & Johnson Company
Joseph Abboud Mfg.
Lafrance Hospitality Company
Linberg Marine
Lutron
Macy's
Manulife Financial
Maritime International
MASSHIRE - Greater New Bedford Workforce Investment
Meeting Street
Moore & Isherwood
New Bedford Housing Authority
New Bedford Medical Investors (Oaks Nursing Home)
Northstar Learning Centers
O'Reilly Auto Parts

Old Colony Regional Voc Tech HS
One SouthCoast Chamber
PACE
Paychex
Precix
Rockland Trust Company
Saint Anne's Hospital
Schaefer Marine
Seven Hills Behavioral Health
Skips Marine Supply
Southcoast Health
Southcoast Visiting Nurse Association
St. Anne's Credit Union
Steppingstone NB
Sylvia Group
Target
TD Bank
Town of Acushnet
Town of Dartmouth
Town of Fairhaven
Travelers
Tremblay's Bus Company, Inc.
United Way of Greater New Bedford
Verizon Foundation
Waring-Sullivan and Rock Funeral Homes
Webster Bank
William Barnet & Son, LLC
YMCA Southcoast
YWCA of Southeastern Massachusetts
ZAPP Precision Strip

This list acknowledges all gifts and pledges made to the 2022-2023 campaign. We have made every effort to provide a complete and accurate report that recognizes all donors. If you note errors or omissions, please accept our sincere apologies and contact us.

GIFTS, SPONSORSHIPS, AND OTHER SUPPORT

\$50,000 +

Acushnet Company
 BayCoast Bank
 City of New Bedford
 Massachusetts Department of Children & Families
 SouthCoast Community Foundation
 - Acushnet Foundation Fund
 - SouthCoast Emergency Response Fund

\$25,000-\$49,999

BankFive
 Eversource

\$10,000-\$24,999

Bank of America
 Bristol County Savings Bank
 Davico Mfg.
 Island Foundation
 Southcoast Health
 St. Anne's Credit Union
 Wendy and Ken Joblon

\$5,000-\$9,999

Burlington Stores Foundation
 Claremont Companies
 Denell and Justin Brodeur
 Massachusetts Bankers Assoc. Charitable Foundation Inc.
 Point32 Health
 The Bilezikian Family Foundation
 The Sidney J. Weinberg, Jr. Foundation

\$2,500-\$4,999

Bristol County Savings Bank Charitable Foundation
 Diana D'Agostine
 East Bay Building & Remodeling
 Excel Recycling
 Folia
 Goodway Group
 JICAN Consulting, LLC
 Loanscale
 Mechanics Cooperative Bank
 Milbury & Company, LLC
 Neto Insurance Agency

Pappas Family Charitable Foundation
 Rockland Trust Company
 SouthCoast Processing
 Sylvia Group
 Vermette Enterprises
 Vineyard Wind

\$1,000-\$2,499

Abraham H. Howland Jr. Lodge
 Anthony F. Cordeiro Insurance Agency, LLC
 Arbella Insurance
 Aubertine-Lopes Funeral Home
 Avalon Medical Spa
 BankNewport
 BASK
 Brahmin Leather Works
 Care Free Homes
 Citizens Charitable Foundation
 Coastal Financial
 Congregational Church of South Dartmouth
 Cornell Dubilier Electronics
 Demoulas Market Basket Foundation
 Edward Jones Charitable Gift Fund
 Feingold Bonnet-Herbert, P.C.
 First Citizens' Federal Credit Union
 Guild Mortgage
 Lima Construction
 MassMutual
 Milestone Mortgage Solutions
 Neighborhood Auto Service
 New England Truck Solutions of Avon
 P. J. Keating Co.
 Plimoth Investment Advisors
 PricewaterhouseCoopers
 PS Gourmet Coffee 1
 Raw Seafood
 Southcoast Insurance Group
 Taunton Federal Credit Union
 The Carney Family Charitable Foundation
 Webster Bank
 Whaling City Title & Closing, LLC
 Young Professional Group of SE NE

WE THANK THE FOLLOWING BUSINESSES AND ORGANIZATIONS FOR DONATING PRODUCTS AND SERVICES VALUED AT \$1,000 AND UP TO UNITED WAY OVER THE PAST YEAR.

Acushnet Company
 Avalon Medical Spa
 Baby Boudoir
 Blount Fine Foods
 Brahmin Leather Works
 Constantly Varied Gear
 Exquisite Events
 Folia

Hannoush Jewelers
 Highland Street Foundation
 L'Oreal USA
 Malulani Surey
 Reynolds DeWalt
 Sharing the Harvest Community Farm, a program of YMCA
 Southcoast Dartmouth

Shimmer
 Southcoast Behavioral Health Hospital
 Table Talk Pies
 Touch of Grace
 Touchstone Crystal - Darcie Fisher
 Townsquare Media

FUNDRAISERS



Power of the Purse

United Way of Greater New Bedford hosts three signature fundraisers to support our work in the community. Each event has a unique look and feel and engage support at all levels.

Power of the Purse, the Women United signature event, is the quintessential ladies night out to support its early childhood success and literacy initiatives. For the second year in a row, the sold-out evening was named the Best Gala by Southcoast Almanac readers! This can't-miss event brings together women for a fabulous night to show that there is significant power in the purse.



Our inaugural **Autumn Soiree**, held in October, celebrated all things fall. Held at the perfectly themed Box Mill Hall in Wareham, guests enjoyed a curated menu from the highly sought-after Social Table Experience, live entertainment, and participated in games throughout the evening. The Autumn Soiree is sure to be a long-standing United Way tradition.



The **Camp United Bash** was a fun-filled camp themed night under the stars at Shining Tides at the Mattapoisett YMCA. Despite a few rain showers, which produced a beautiful rainbow over the event, guests partook in some memorable activities from their own summer camp days including archery, food from the grill, and, of course, s'mores and music by the campfire!



BOARD OF DIRECTORS

DR. SHANNA HOWELL, PhD.
Vice Principal of Student Support Services, Southeastern Regional Vocational Technical High School
Chair

CHRISTOPHER FORTIER,
PharmD, FASHP, CPEL
President, Nephron Pharmaceuticals
Vice Chair

JENNIFER OLIVIER, CPA
CliftonLarsonAllen LLP
Principal, Non-Profit
Treasurer

JENNIFER ST. PIERRE, CPA
BankFive
CFO & Treasurer
Clerk

ROLAND GIROUX, ESQ.
Acushnet Company
Executive Vice President & Chief Legal Officer
Immediate Past Chair

NICOLE ALMEIDA
Massachusetts Bankers Association

STARLENE ALVES, ESQ.
Alves Law Group

HEATHER M. BONNET-HEBERT, ESQ.
Feingold Bonnet-Hebert, P.C.

MORGAN DIAZ
Athena Health

JENNIFER DOWNING
New Bedford Ocean Cluster

FRANCINE FERGUSON
Bristol County Savings Bank

MONTE FERRIS JR.
Ferris Development Corporation
and Venus de Milo

DAVID GOMES, ESQ.
UMass Dartmouth

DONALD HARTLEY
Ocean Point Investment Solutions

ROSEMARIE LOPES
Sylvia Group

MAEGAN POWERS
Service Ended June 2023

JACQUELINE GANNON SOMERVILLE, Ph.D., RN
Southcoast Health

RAY SUPRENANT
Davico Manufacturing



"My relationship with United Way started back in 2012 and has continued ever since as either a board member or volunteer. United Way serves the community and focuses on areas of need that I find are pivotal and are near and dear to my heart. I will always be a supporter of United Way."

– **DR. SHANNA HOWELL, PhD.**
Chair of the Board

WOMEN UNITED LEADERSHIP COUNCIL

STARLENE ALVES
Alves Law Group

CHERYL BARTLETT
New Bedford Community Health

KATE CARNEY
Carney Family Charitable Foundation

JENNIFER DOWNING
New Bedford Ocean Cluster

BETH MCDERMOTT
Buzzards Bay Coalition

GUELMIE SANTIAGO
Santiago Professional Services

JILL SIMOES
JICAN Consulting

NBCCC ADVISORY BOARD

ESPERANZA ALEJANDRO-BERUBE
New Bedford Housing Authority

KATLYN AUTY
Southcoast Behavioral Health

LUCY CANUEL
Massachusetts Department of Children & Families (Interim Chair)

MARIA DEMELO
Family Resource & Development Center (UWGNB)

NICOLE FERREIRA
New Bedford Public Schools

NICOLE HEANEY, MSW
Bristol Community College

PAM KEUHLER
PACE

RENEE LEDBETTER
NorthStar Learning Centers

GLENN OLIVEIRA
Carney Family Foundation

JOHN SILVA
New Bedford Women's Center

STAFF

MICHELLE NEVES HANTMAN
President & CEO
mhantman@unitedwayofgnb.org

STANLEY BRAJER
Director of NBCCC
sbrajer@unitedwayofgnb.org

WILL COLEMAN
Hunger Commission Assistant
hungercommission@unitedwayofgnb.org

KRISTINE A. CUNNINGHAM
Development Manager
kcunningham@unitedwayofgnb.org

MARIA DEMELO
Family Resource & Development Center Program Director
mdemelo@unitedwayofgnb.org

SAVANNAH DUARTE
Family Support Worker
sduarte@unitedwayofgnb.org

CARLA FERNANDES
Child & Family Services
Family Partner
cfernandes@unitedwayofgnb.org

KATHERINE FURTADO
Chief Finance & Human Resource Officer
kfurtado@unitedwayofgnb.org

FATIMA GALARZA
School Liaison
fgalarza@unitedwayofgnb.org

VICTORIA GRASELA
VP of Marketing & Community Engagement
vgrasela@unitedwayofgnb.org

GRETCHEN HUBERT
Executive Assistant
ghubert@unitedwayofgnb.org

NICOLE KELLY
Office Assistant
nkelly@unitedwayofgnb.org

PAULA MONTGOMERY
Women United Director
pmontgomery@unitedwayofgnb.org

EMMA RIVERA
Family Support Worker
erivera@unitedwayofgnb.org

SARAH ROSE
Chief Impact Officer
srose@unitedwayofgnb.org

TELMA ROSA-SILVA
Family Support Worker
tsilva@unitedwayofgnb.org

LOURDES TORRES
Family Resource and Development Center Receptionist
ltorres@unitedwayofgnb.org

IN REMEMBRANCE



PAUL DUMAS

With profound gratitude and immense respect, we pay tribute to volunteer, friend, supporter and honorary staff member, Paul Dumas. Fondly referred to "Mr. D," he served as our volunteer handyman, building guru, and resident jack-of-all-trades. He was a remarkable individual who played a pivotal role in the history of our organization.

Mr. D. devoted countless hours, unwavering dedication, and boundless passion for United Way of Greater New Bedford. His tenure as our volunteer during the years when we owned 105 William Street was marked by his tireless efforts to ensure a safe and welcoming space for all who walked through our doors and worked in that building.

His warm smile, kindness, and willingness to lend a helping hand left an indelible mark on everyone he encountered. We extend our deepest condolences to Mr. Dumas' family and friends during this time of remembrance. May his memory be a source of comfort and inspiration to all who knew him.

UNITED WAY OF GREATER NEW BEDFORD

128 Union Street, Suite 105
New Bedford, MA 02740
Ph: 508-994-9625
Fax: 508-994-9667
info@unitedwayofgnb.org
unitedwayofgnb.org

NONPROFIT
ORGANIZATION
U.S. POSTAGE PAID
NEW BEDFORD, MA
PERMIT NO. 156

Change Service Requested



**SUPPORT OUR WORK.
MAKE A DONATION
TODAY.**

.....
CONNECT WITH US



@unitedwayofgnb